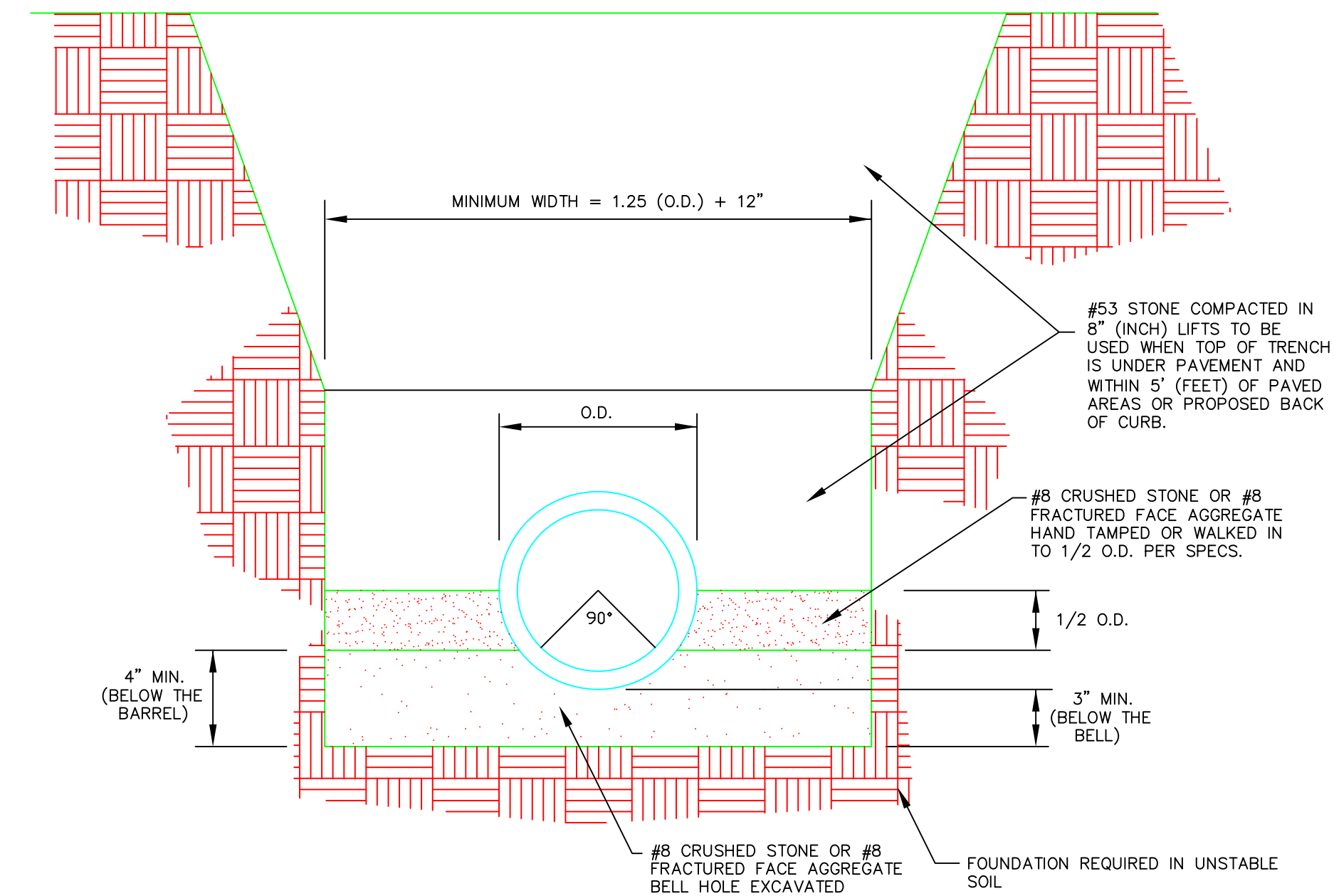


CONCRETE SLOEWALL DETAIL

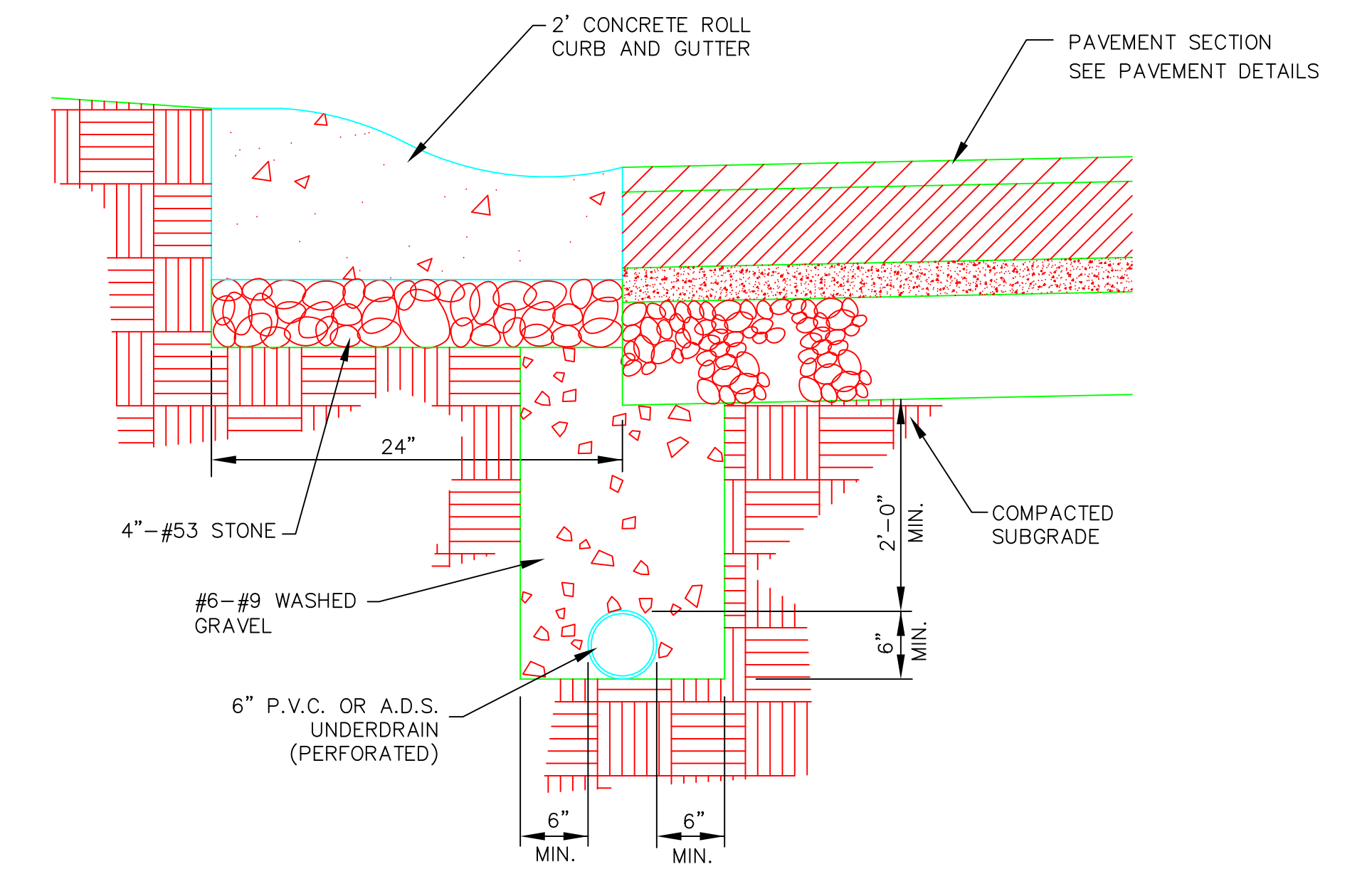
NO SCALE

NOTE:
SIDE SLOPES OF TRENCH TO BE CONSTRUCTED PER LATEST OSHA REQUIREMENTS



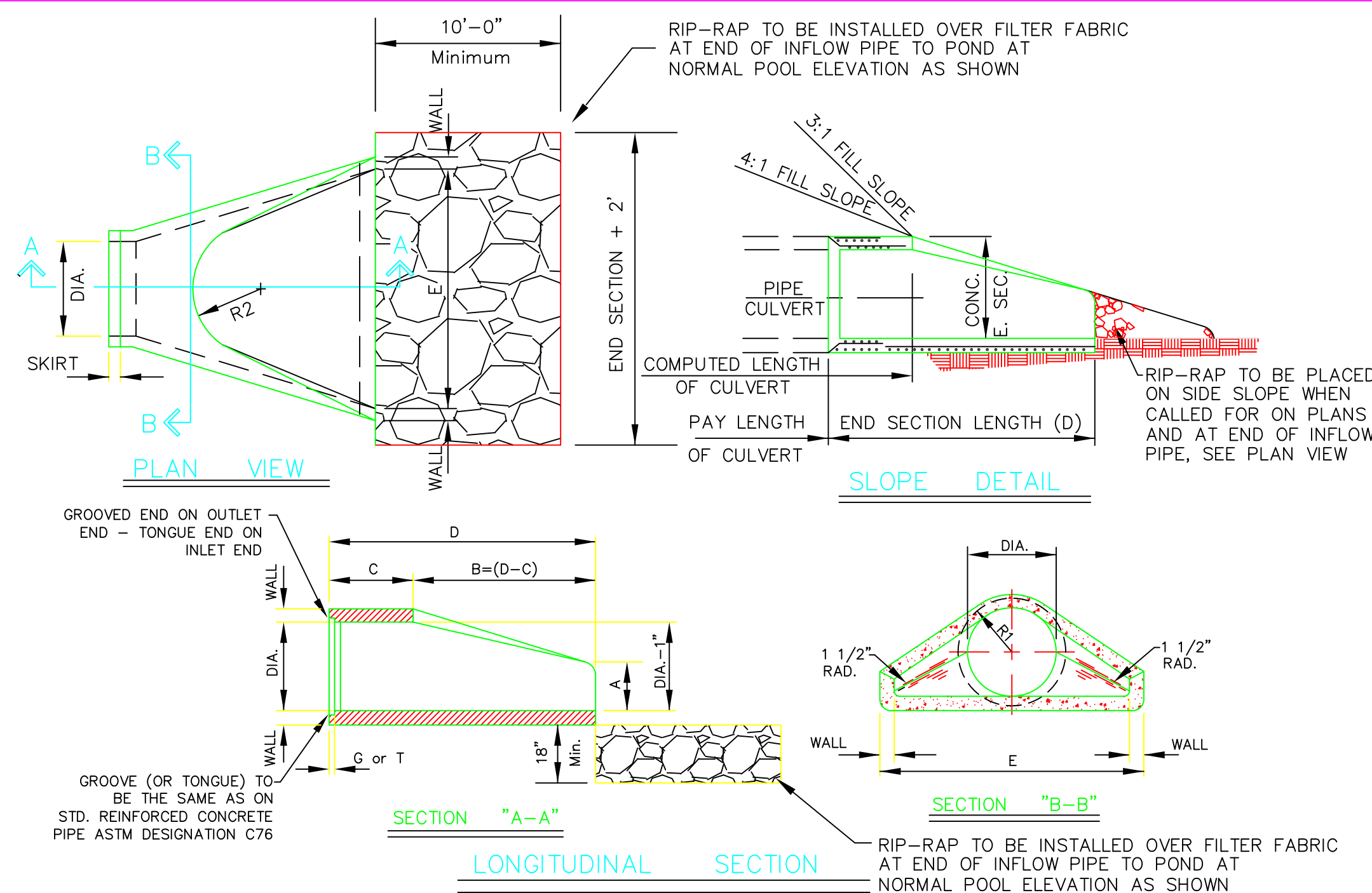
RIGID PIPE BEDDING DETAIL (CONCRETE PIPE)

NO SCALE



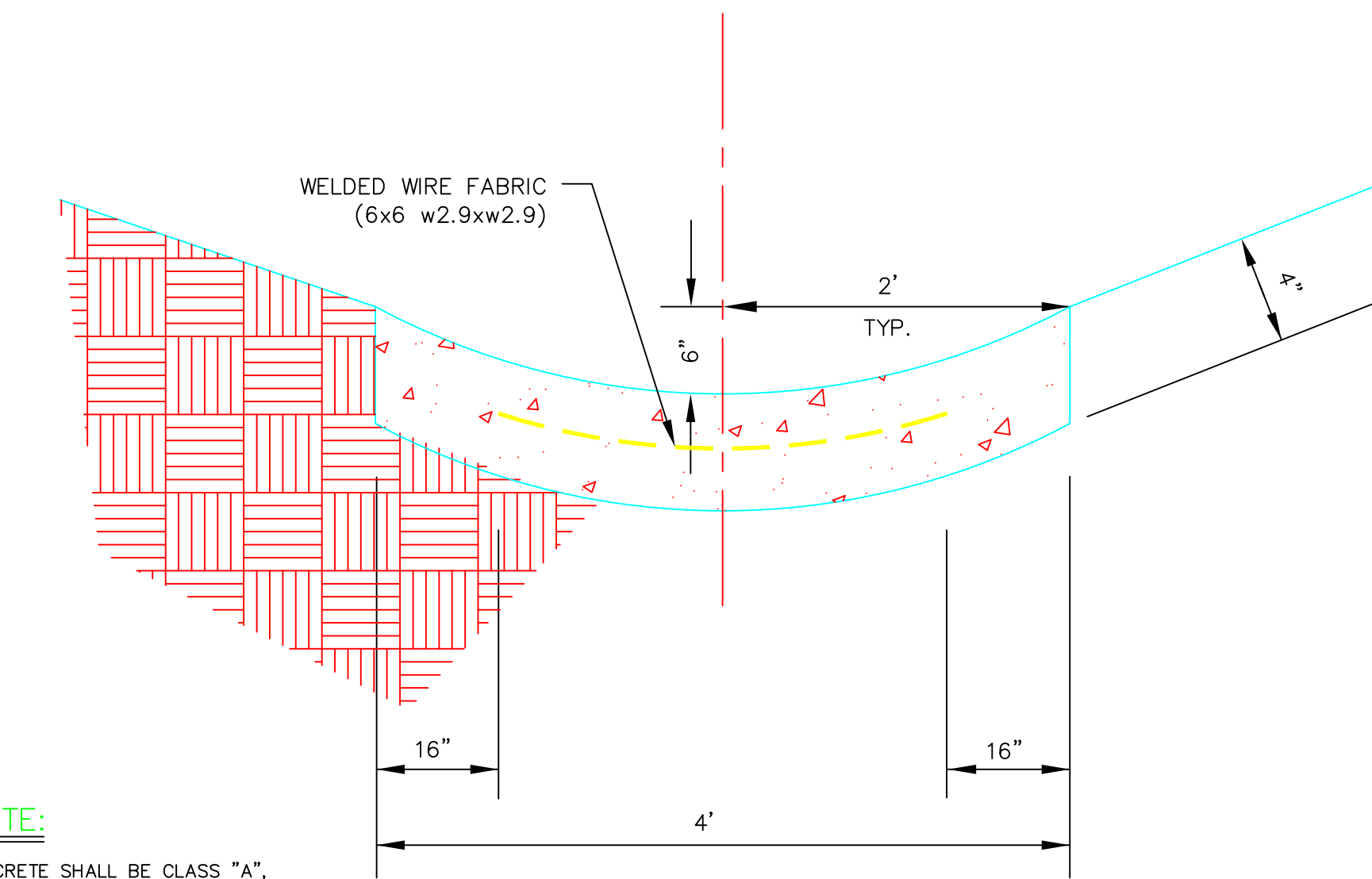
6" CURB UNDERDRAIN DETAIL

NO SCALE



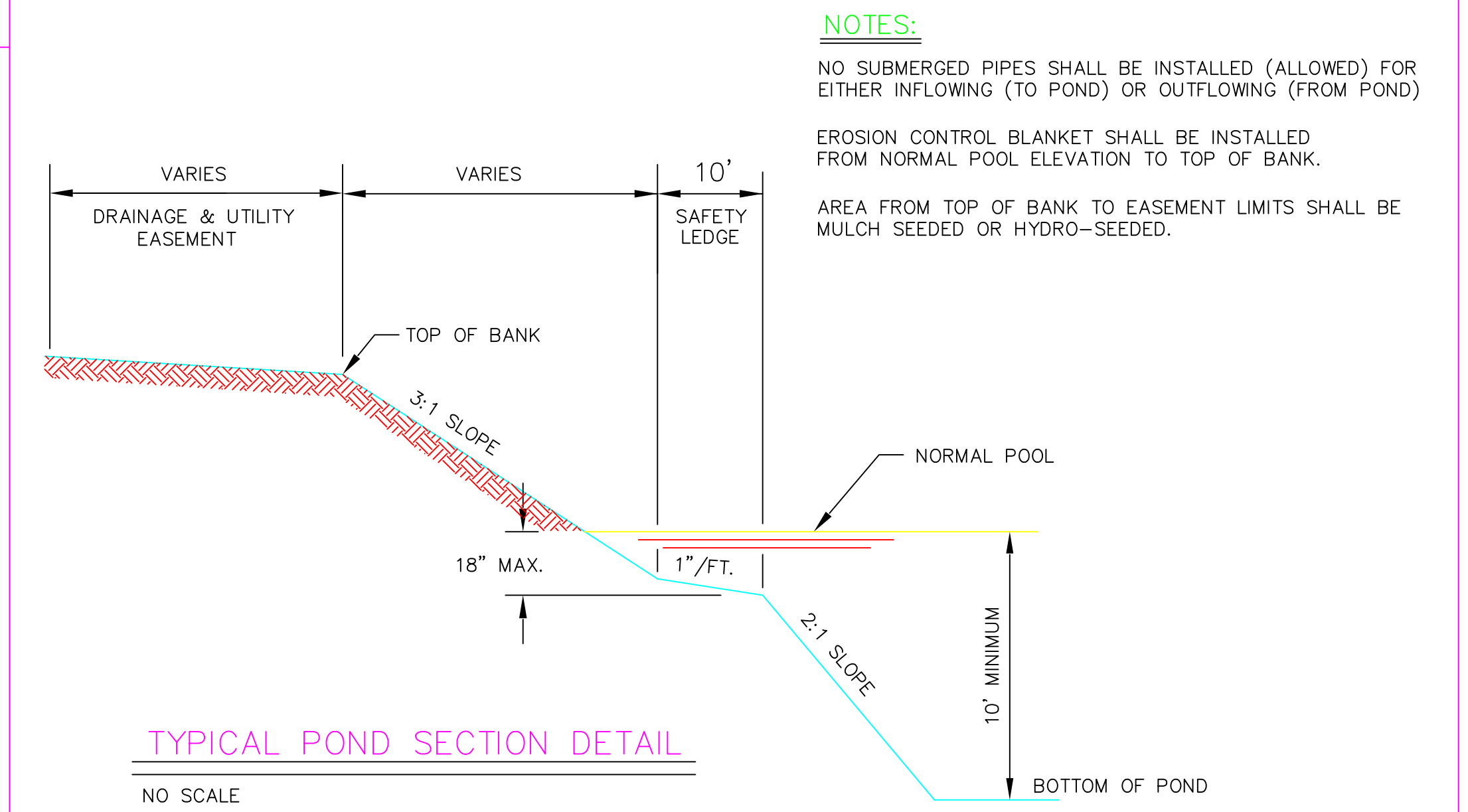
PRECAST CONCRETE END SECTION DETAIL

NO SCALE



CONCRETE PAVED SIDE DITCH CROSS SECTION DETAIL

NO SCALE



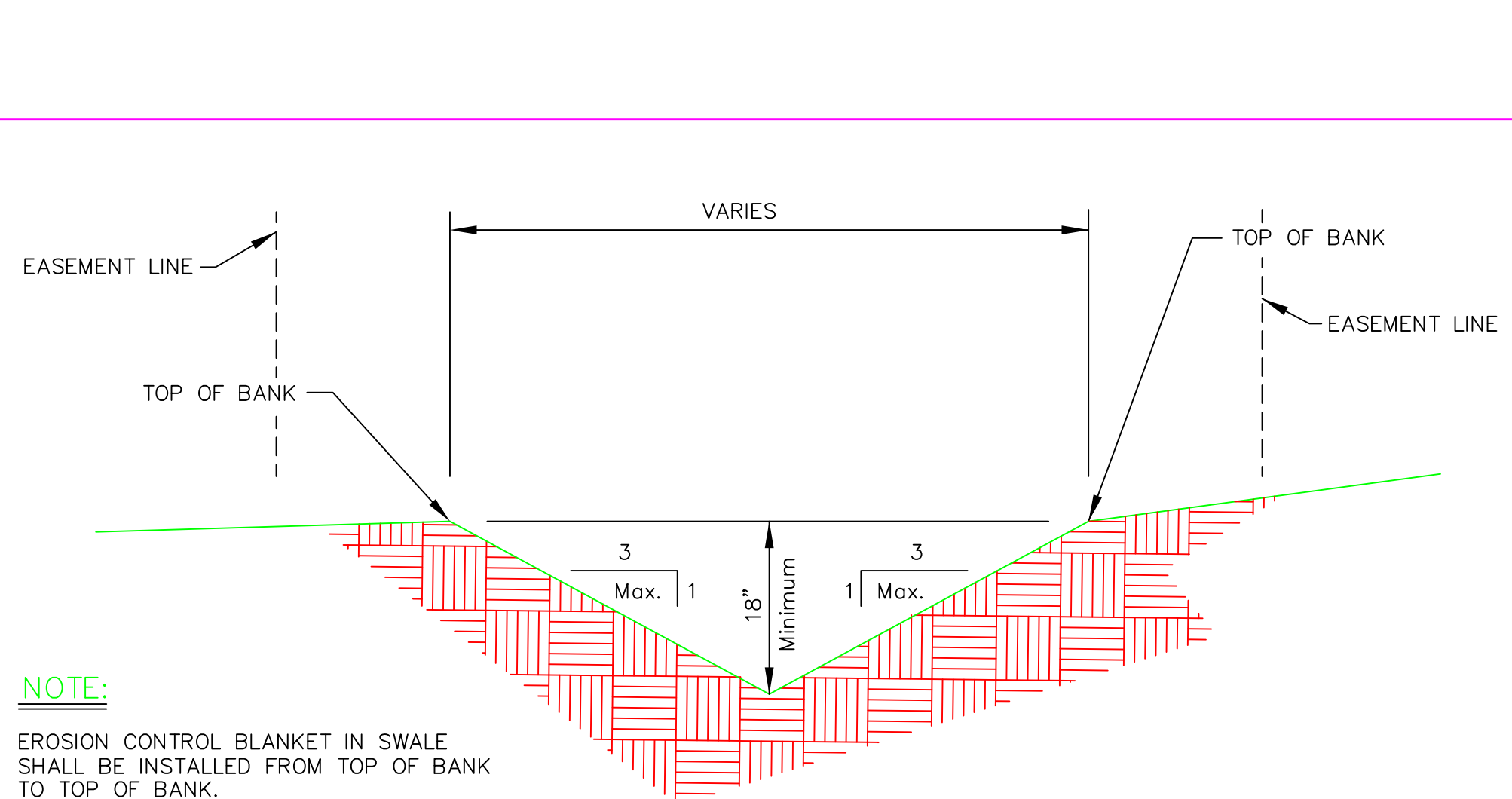
TYPICAL POND SECTION DETAIL

NO SCALE

DIMENSIONS OF CONCRETE END SECTIONS FOR ROUND PIPE

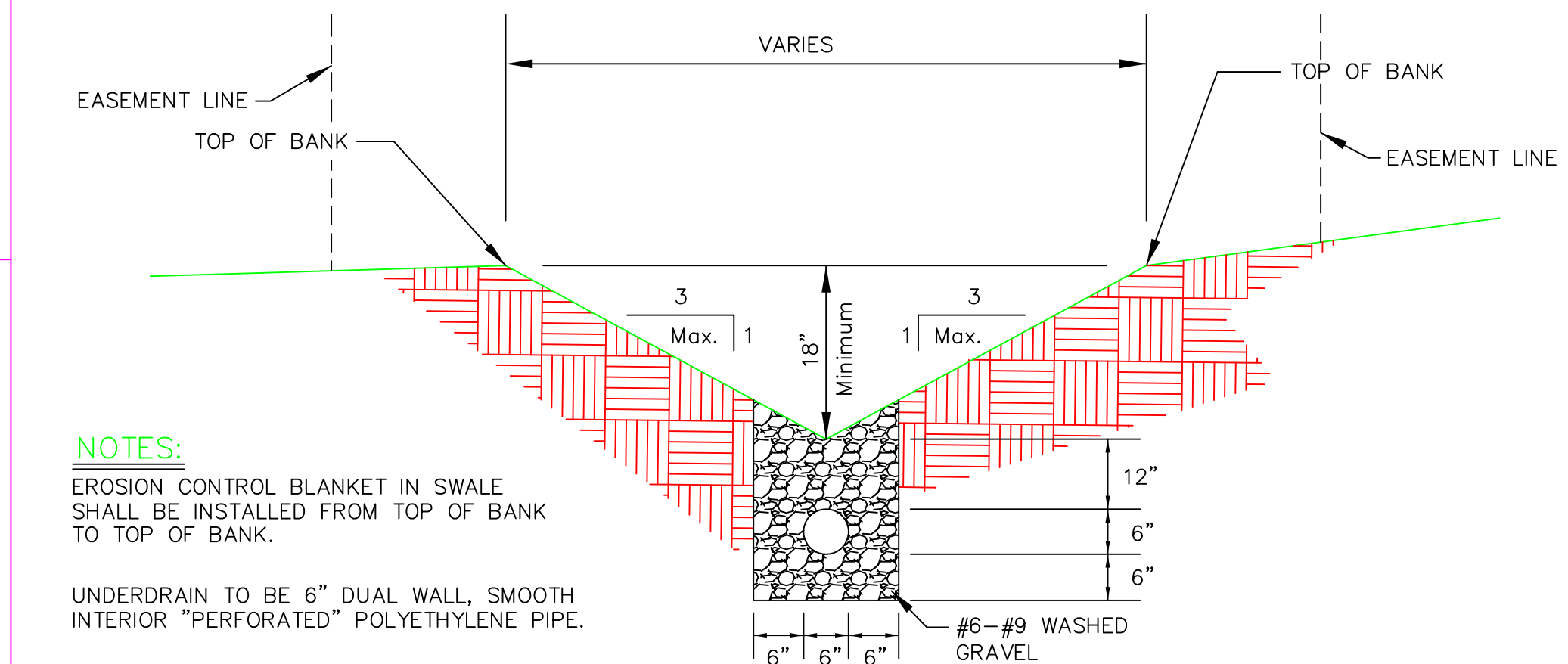
DIA.	WALL	G or T	WT. SEC.	A	B	C	D	E	DIA.+1	R ₁	R ₂	SKIRT
12"	2"	1 1/2"	530	4"	24"	48 7/8"	72 7/8"	24"	13"	10 1/16"	9"	3 1/2"
15"	2 1/4"	2"	740	6"	27"	46"	73"	30"	16"	12 1/2"	11"	3 1/2"
18"	2 1/2"	2 1/2"	990	9"	27"	46"	73"	36"	19"	15 1/2"	12"	4"
21"	2 3/4"	2 1/4"	1280	9"	35"	38"	73"	42"	22"	16 1/8"	13"	4"
24"	3"	2 1/2"	1520	9 1/2"	43 1/2"	30"	73 1/2"	48"	25"	16 11/16"	14"	4 1/2"
27"	3 1/4"	2 1/2"	1930	10 1/2"	48"	25 1/2"	73 1/2"	54"	28"	17 3/4"	14 1/2"	4 1/2"
30"	3 1/2"	3"	2190	12"	54"	19 3/4"	73 3/4"	60"	31"	18 5/16"	15"	5"
33"	3 3/4"	3 3/8"	3150	13 1/2"	58 1/2"	39 1/4"	97 3/4"	66"	34"	23 3/4"	17 1/2"	5 1/2"
36"	4"	3 1/2"	4100	15"	63"	34 3/4"	97 3/4"	72"	37"	24 1/16"	20"	5 1/2"
42"	4 1/2"	3 3/4"	5380	21"	63"	35"	98"	78"	43"	27 1/4"	22"	5 1/2"
48"	5"	4 1/4"	6550	24"	72"	26"	98"	84"	49"	28 1/8"	22"	5 3/4"
54"	5 1/2"	4 3/4"	8040	27"	65"	35"	100"	90"	55"	32 7/8"	24"	6 1/4"
60"	6"	5"	8750	30"	60"	39"	99"	96"	61"	36 3/4"	24"	6 3/4"
66"	6 1/2"	5 1/2"	10630	24"	78"	21"	99"	102"	67"	35 11/16"	24"	7 1/4"
72"	7"	6"	12520	34"	78"	21"	99"	108"	73"	38 5/8"	24"	7 3/4"
78"	7 1/2"	6 1/2"	14430	24"	78"	21"	99"	114"	79"	41 15/16"	24"	8 1/2"
84"	8"	7"	16350	24"	78"	21"	99"	120"	85"	44 13/16"	24"	9"

NOTE: MANUFACTURE OF END SECTION IS IN ACCORDANCE WITH APPLICABLE PORTIONS OF A.S.T.M. SPECIFICATION C76



TYPICAL SWALE CROSS SECTION DETAIL

NO SCALE



TYPICAL SWALE WITH UNDERDRAIN CROSS SECTION DETAIL

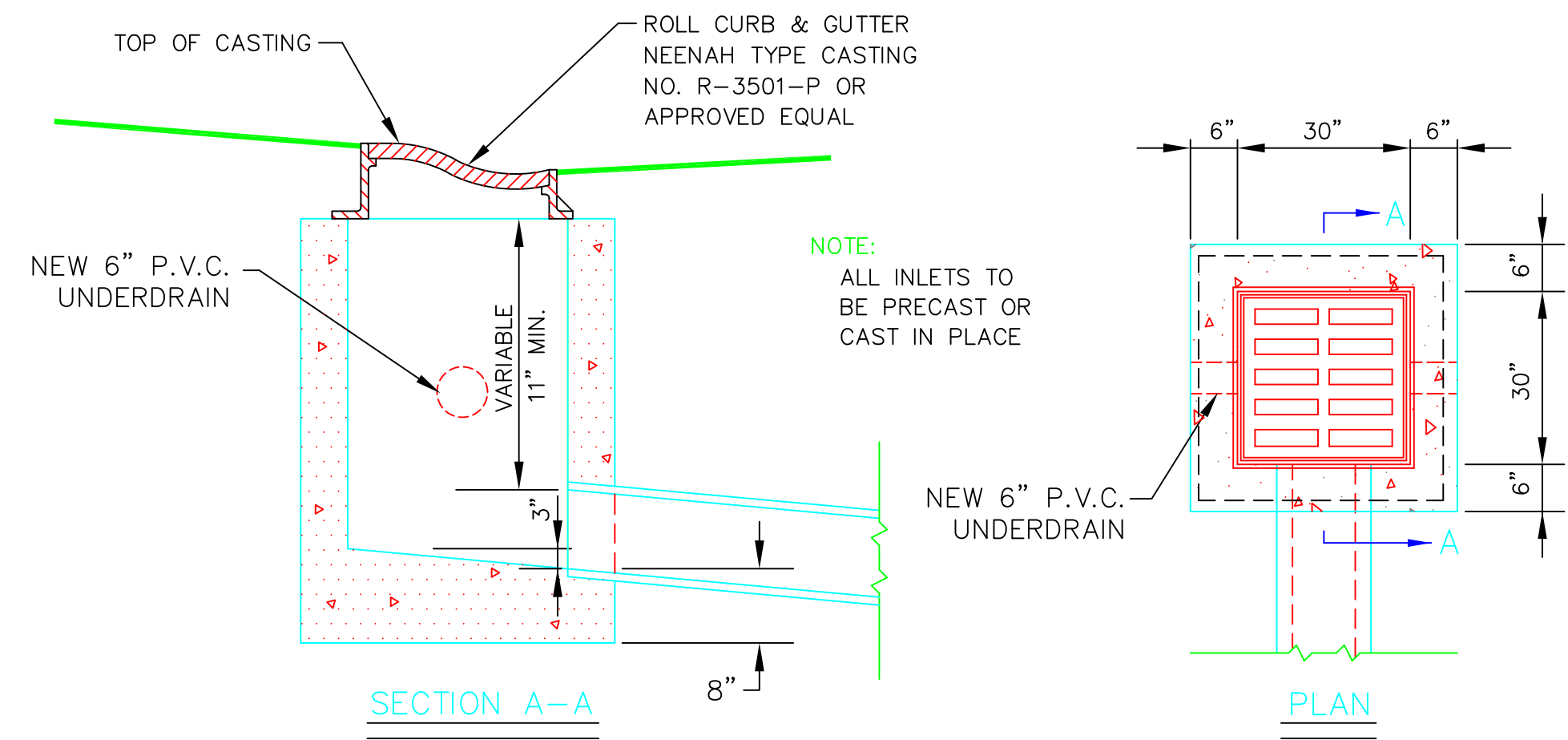
NO SCALE

NOTES:
EROSION CONTROL BLANKET IN SWALE SHALL BE INSTALLED FROM TOP OF BANK TO TOP OF BANK.
UNDERDRAIN TO BE 6" DUAL WALL, SMOOTH INTERIOR "PERFORATED" POLYETHYLENE PIPE.

THIS DRAWING AND THE IDEAS, DESIGNS AND CONCEPTS CONTAINED HEREIN ARE THE EXCLUSIVE INTELLECTUAL PROPERTY OF THE CITY OF GREENWOOD AND ARE NOT TO BE REVISED, CHANGED OR EDITED IN ANY WAY WITHOUT THE WRITTEN CONSENT OF THE CITY.
CITY OF GREENWOOD ENGINEERING 2002

REVISION	DATE	BY	PROJECT	CITY OF GREENWOOD, INDIANA ENGINEERING DIVISION
Per City Engineering Department	5/10/02	GLA	STORM DETAILS- SHEET 1	225 South Emerson Avenue Greenwood, Indiana 46143 Telephone: (317) 887-5230
City Engineering Division	02/2013	pdp		

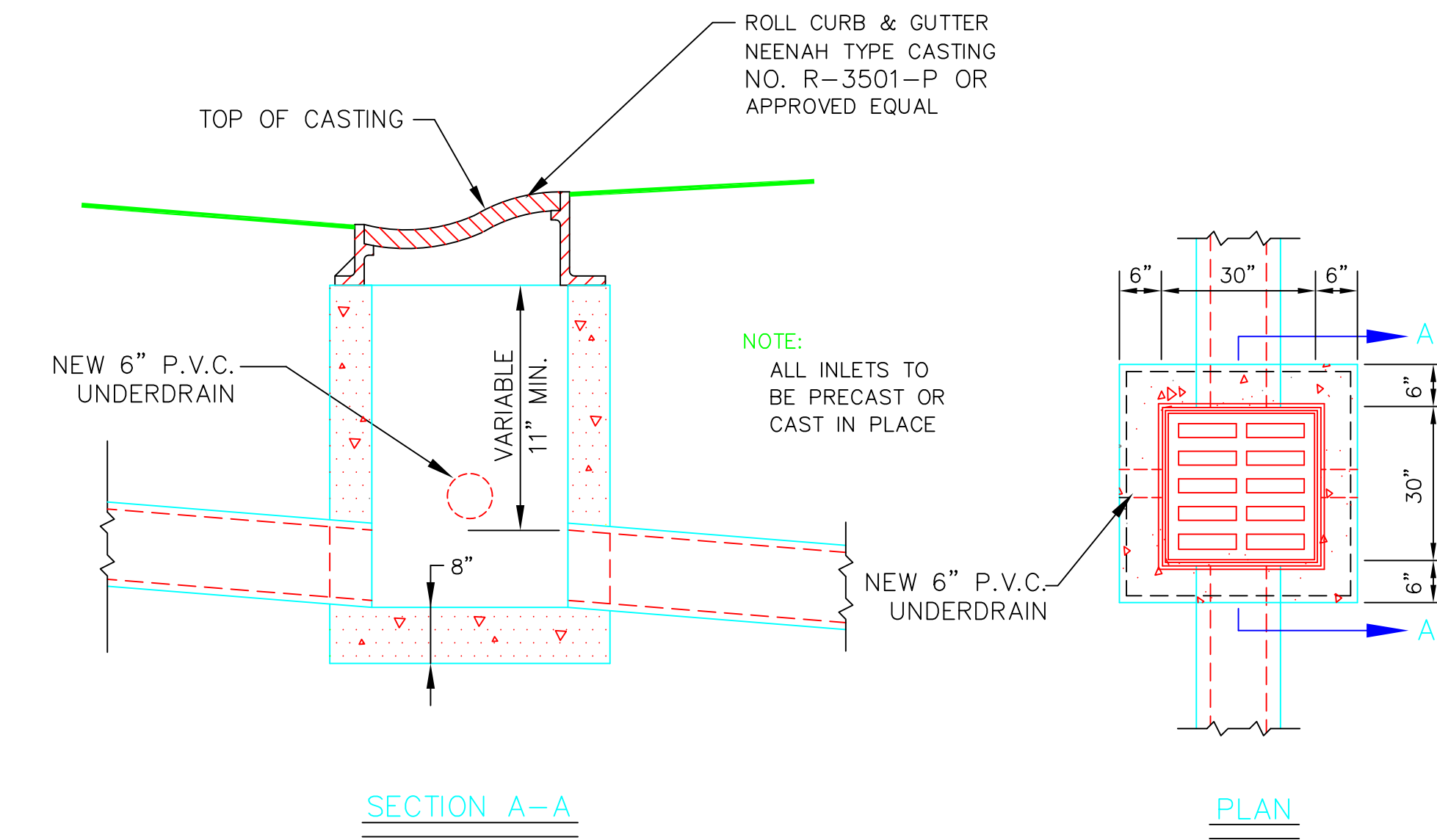
ALL STORM SEWER CASTINGS (OPEN LIDS AND SOLID LIDS) SHALL HAVE AN ENVIRONMENTAL LOGO SUCH AS "DUMP NO WASTE, DRAINS TO WATERWAYS" EMBOSSED (STAMPED) INTO CASTING. NO "ADD-ON" PLATES OR STICKERS (DECALS) WILL BE PERMITTED.



TYPE "C" INLET DETAIL

NO SCALE

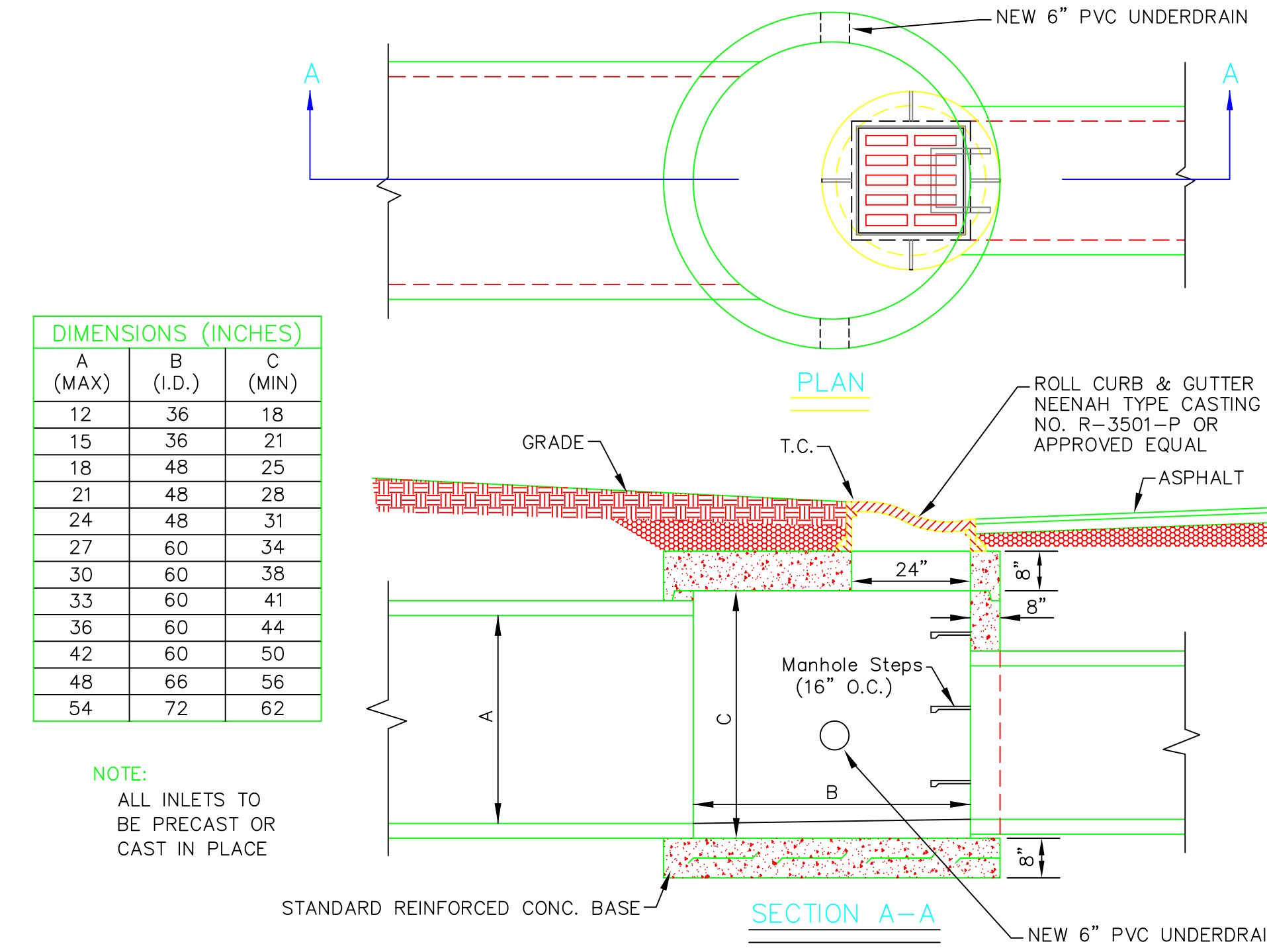
ALL STORM SEWER CASTINGS (OPEN LIDS AND SOLID LIDS) SHALL HAVE AN ENVIRONMENTAL LOGO SUCH AS "DUMP NO WASTE, DRAINS TO WATERWAYS" EMBOSSED (STAMPED) INTO CASTING. NO "ADD-ON" PLATES OR STICKERS (DECALS) WILL BE PERMITTED.



TYPE "C1" INLET DETAIL

NO SCALE

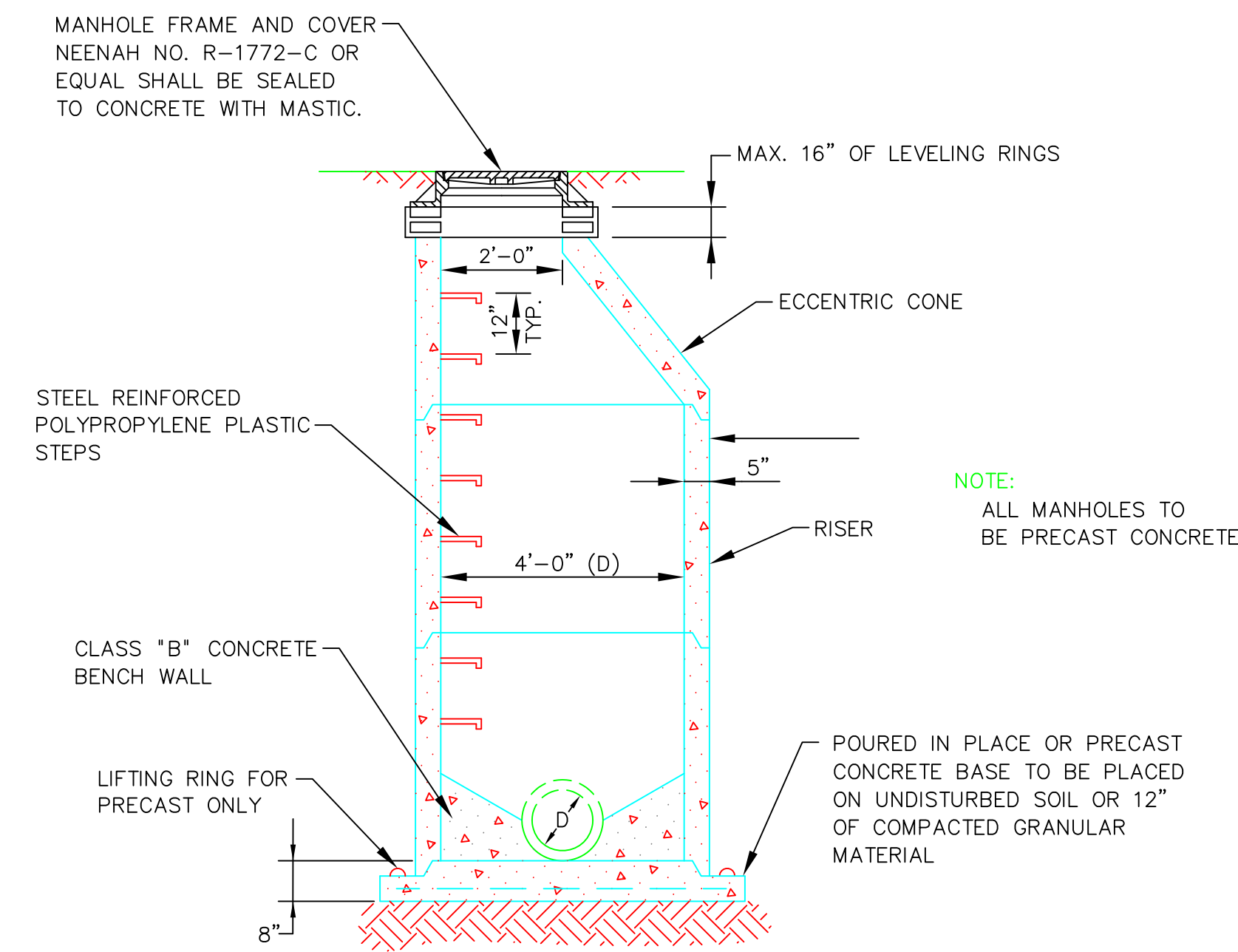
ALL STORM SEWER CASTINGS (OPEN LIDS AND SOLID LIDS) SHALL HAVE AN ENVIRONMENTAL LOGO SUCH AS "DUMP NO WASTE, DRAINS TO WATERWAYS" EMBOSSED (STAMPED) INTO CASTING. NO "ADD-ON" PLATES OR STICKERS (DECALS) WILL BE PERMITTED.



TYPE "C2" INLET DETAIL

NO SCALE

ALL STORM SEWER CASTINGS (OPEN LIDS AND SOLID LIDS) SHALL HAVE AN ENVIRONMENTAL LOGO SUCH AS "DUMP NO WASTE, DRAINS TO WATERWAYS" EMBOSSED (STAMPED) INTO CASTING. NO "ADD-ON" PLATES OR STICKERS (DECALS) WILL BE PERMITTED.



STORM MANHOLE DETAIL

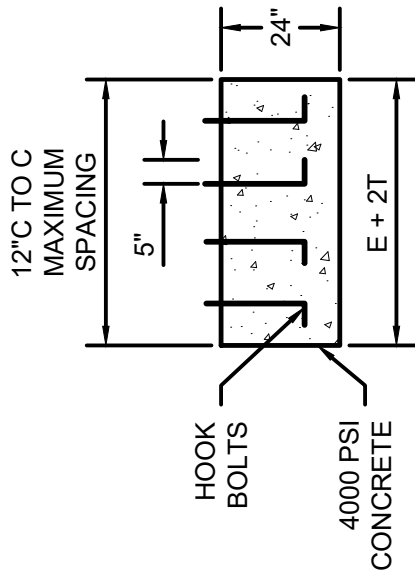
NO SCALE

ALL STORM SEWER CASTINGS (OPEN LIDS AND SOLID LIDS) SHALL HAVE AN ENVIRONMENTAL LOGO SUCH AS "DUMP NO WASTE, DRAINS TO WATERWAYS" EMBOSSED (STAMPED) INTO CASTING. NO "ADD-ON" PLATES OR STICKERS (DECALS) WILL BE PERMITTED.

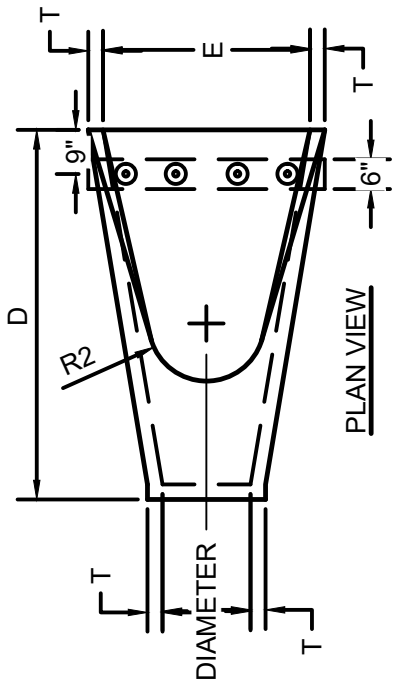
THIS DRAWING AND THE IDEAS, DESIGNS AND CONCEPTS CONTAINED HEREIN ARE THE EXCLUSIVE INTELLECTUAL PROPERTY OF THE CITY OF GREENWOOD AND ARE NOT TO BE REVISED, CHANGED OR EDITED IN ANY WAY WITHOUT THE WRITTEN CONSENT OF THE CITY.

CITY OF GREENWOOD ENGINEERING 2002

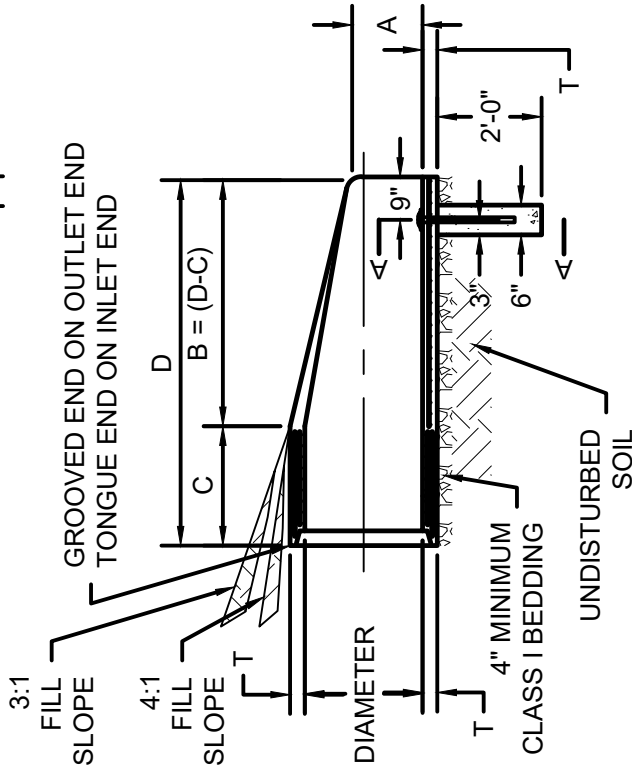
REVISION	DATE	BY	PROJECT	CITY OF GREENWOOD, INDIANA ENGINEERING DIVISION
Per City Engineering Department	5/10/02	GLA	TITLE STORM DETAILS- SHEET 2	
City Engineering Division	02/2013	pdp		



SECTION A
CONCRETE PIPE TOE ANCHOR



PLAN VIEW



LONGITUDINAL SECTION

DIA	T (MIN)	A*	C*	D*	E*	R ₁	R ₂	APPROX WEIGHT
12"	2"	5"	51"	74"	24"	10.125"	9"	800
15"	2.25"	7"	48"	75"	30"	12.5"	11"	1100
18"	2.5"	11"	49"	74"	36"	15.5"	12"	1300
21"	2.75"	11"	42"	75"	42"	16.125"	13"	1500
24"	3"	12"	32"	75"	48"	16.375"	14"	1800
27"	3.25"	13"	29"	75"	54"	18.563"	14.5"	2100
30"	3.5"	14"	22"	75"	60"	18.5"	15"	2400
33"	3.75"	15"	42"	99"	66"	23.75"	17.5"	4100
36"	4"	17"	37"	99"	72"	24.625"	20"	4200

* TOLERANCE ±

PRECAST CONCRETE END SECTION

SCALE: NONE